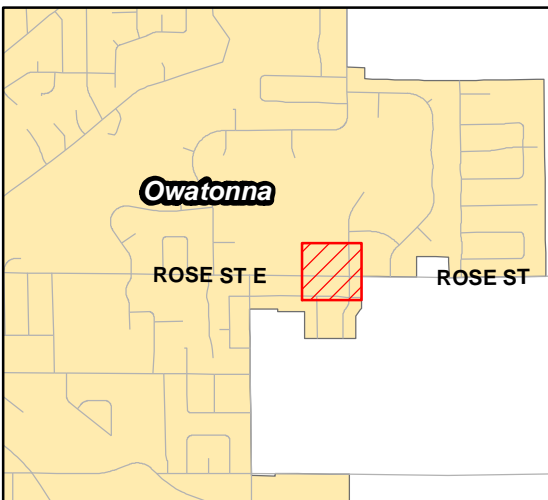


## Emergency Warning Siren Owatonna Site No. 1

Location: 14th St NE/3rd Ave NE - Water Tower  
 Model: 2001DC  
 db: 128  
 Coverage: 5200'

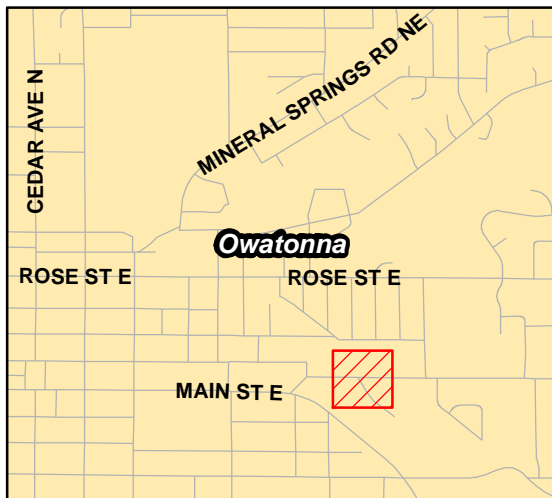




## Emergency Warning Siren Owatonna Site No. 2

Location: 1500 Rose St E - Brook Tree Golf Maint. Shop  
 Model: Thunderbeam  
 db: 130  
 Coverage: 6200'





## Emergency Warning Siren Owatonna Site No. 3

Location: 800 BLK Rice Lake St E - Gandy Co.  
 Model: ACA Superbanshee  
 db: 130  
 Coverage: 6200'

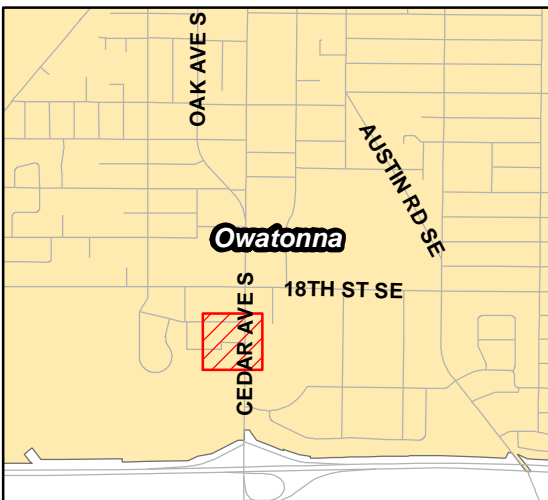




## Emergency Warning Siren Owatonna Site No. 4

Location: 1600 Austin Rd SE - Fairgrounds Park  
 Model: 2001DC  
 db: 128  
 Coverage: 5200'

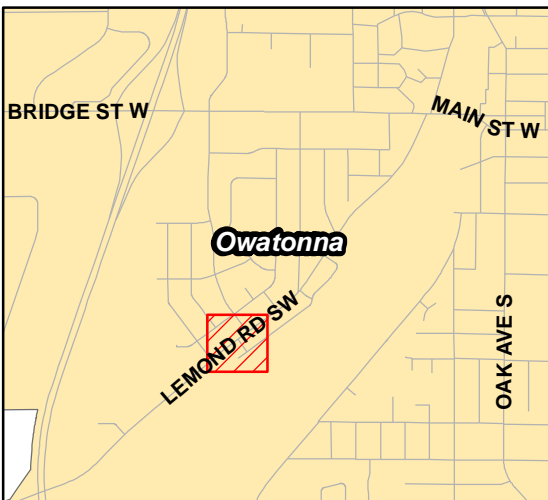




## Emergency Warning Siren Owatonna Site No. 5

Location: 1930 Cedar Ave S - Sacred Heart Cemetery  
 Model: STH10A  
 db: 130  
 Coverage: 6200'

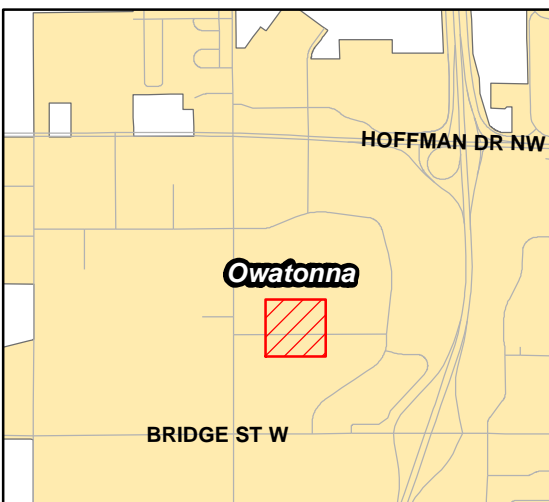




## Emergency Warning Siren Owatonna Site No. 6

Location: Lemond Rd & Riverwood  
 Model: 2001DC  
 db: 130  
 Coverage: 6200'

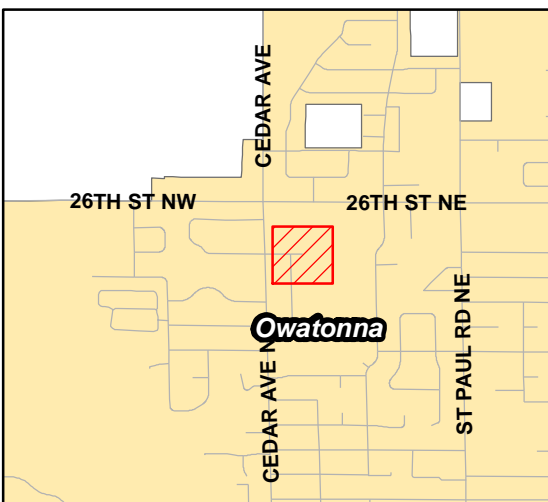
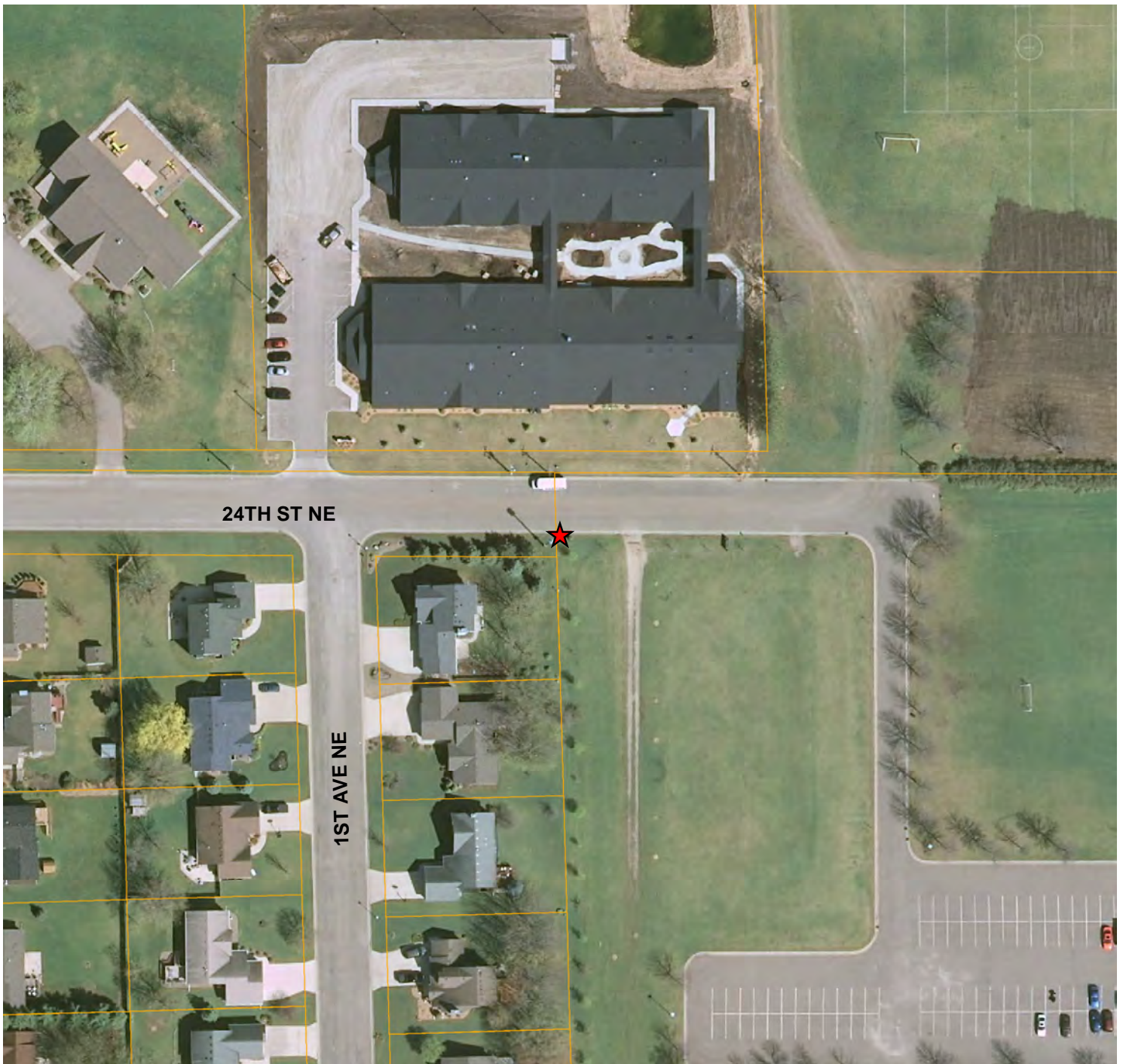




## Emergency Warning Siren Owatonna Site No. 7

Location: 2278 4th St NW - Viracon  
Model: 2001DC  
db: 128  
Coverage: 5200'



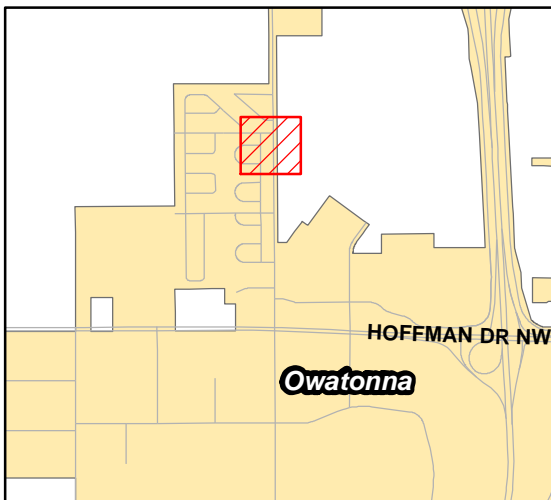


## Emergency Warning Siren Owatonna Site No. 8

Location: 2385 1st Ave NE  
 Model: Thunderbeam  
 db: 130  
 Coverage: 6200'



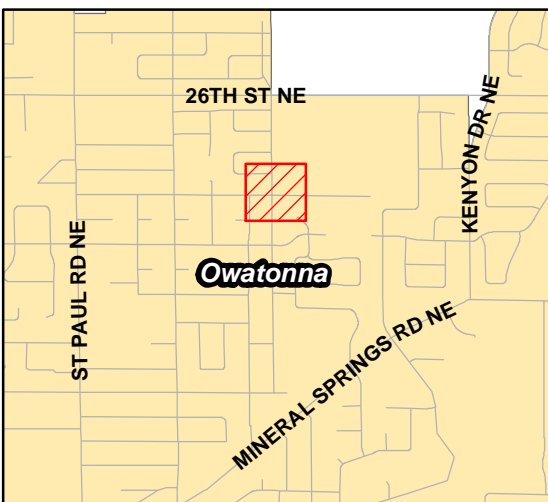




## Emergency Warning Siren Owatonna Site No. 9

Location: 24th Ave NW & 18th St NW - Colonial Manor  
Model: STH10A  
db: 130  
Coverage: 6200'





## Emergency Warning Siren Owatonna Site No. 10

Location: Hemlock Ave & 22nd St NE - Willow Creek  
 Model: Thunderbeam  
 db: 130  
 Coverage: 6200'

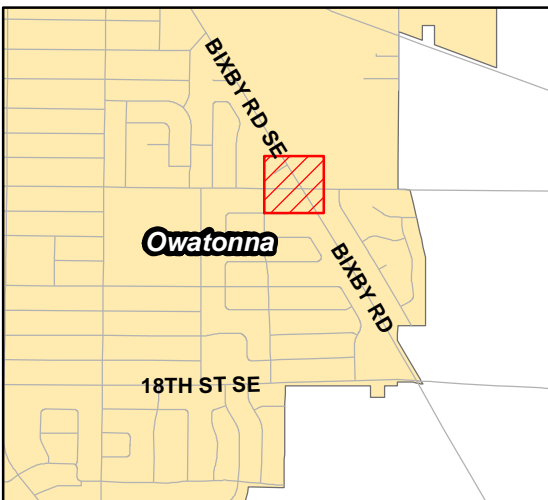
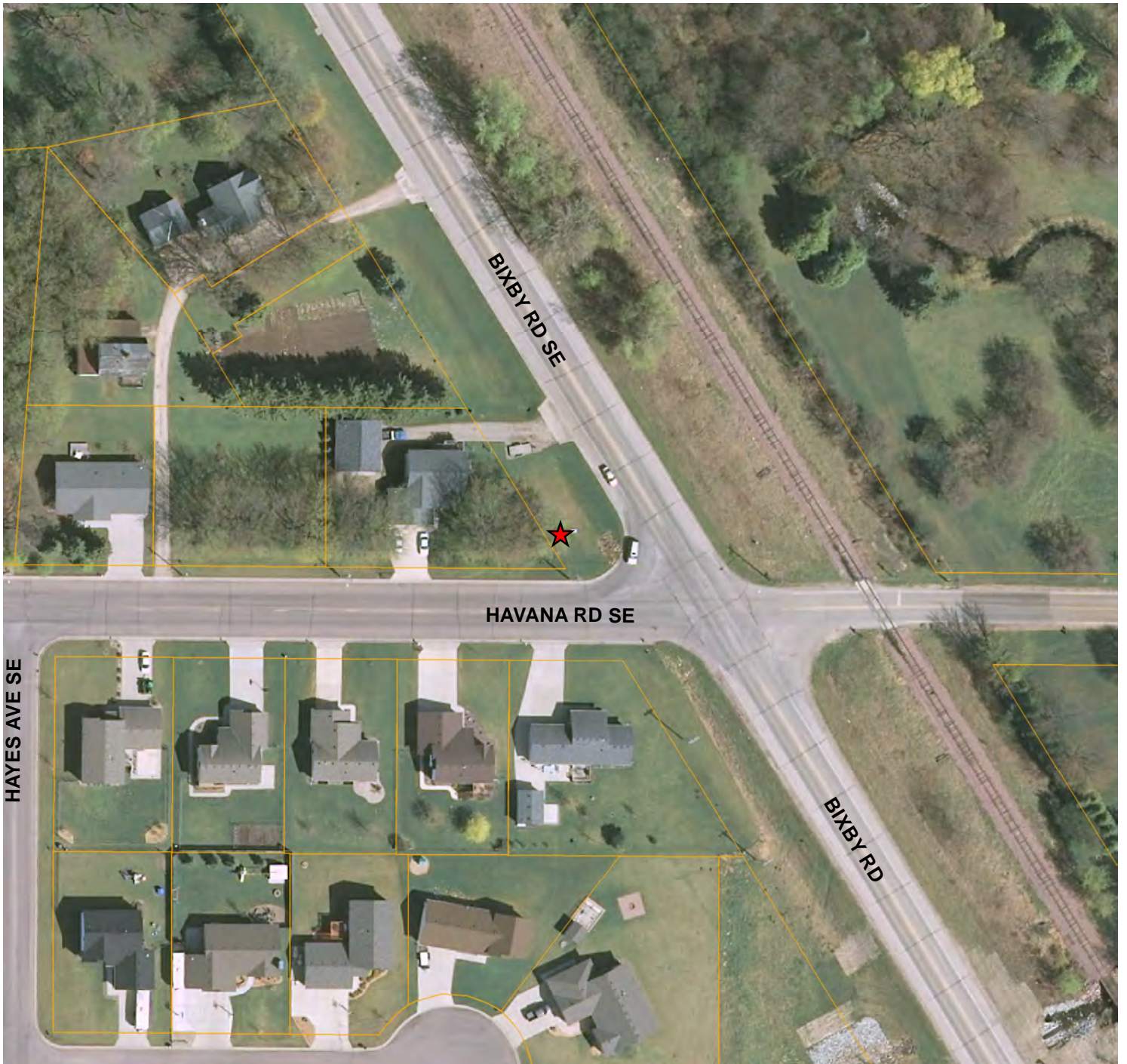




## Emergency Warning Siren Owatonna Site No. 11

Location: OPU Maint. Lot - 280 Bridge St W  
 Model: 2001AC  
 db: 127  
 Coverage: 5200'

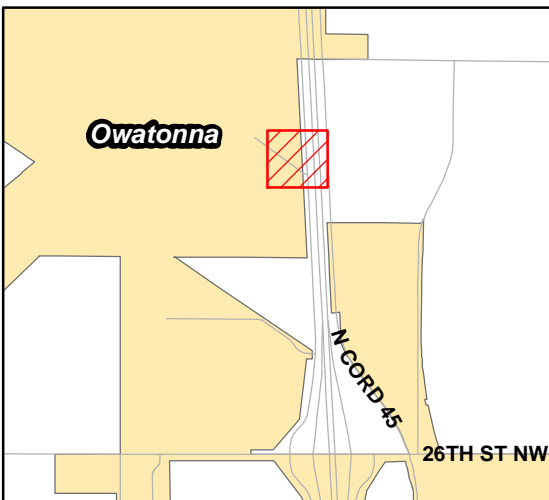
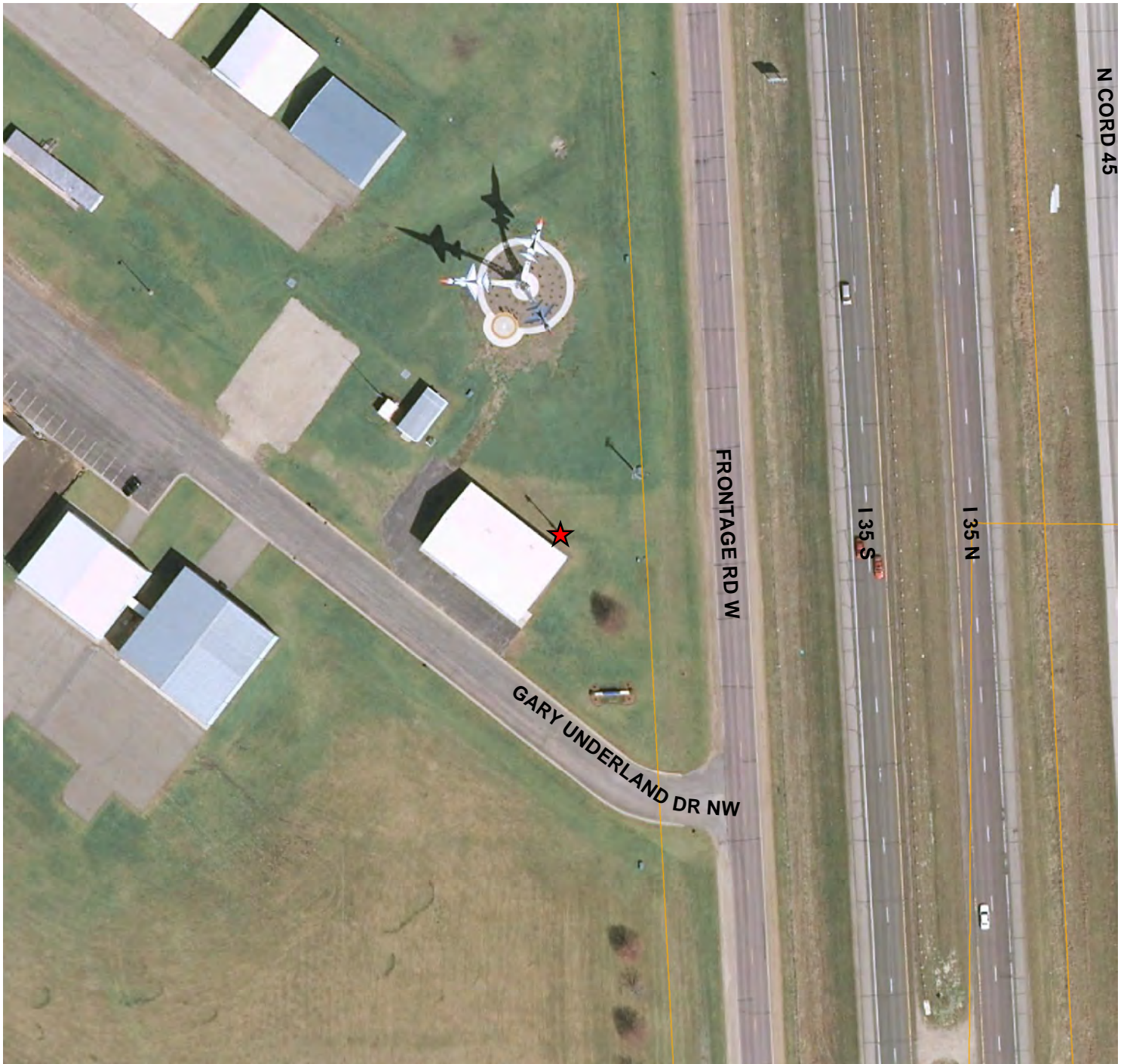




## Emergency Warning Siren Owatonna Site No. 12

Location: Bixby Rd & Havana Rd SE  
Model: 2001DC  
db: 127  
Coverage: 5200'





## Emergency Warning Siren Owatonna Site No. 13

Location: 3400 Frontage Rd W - Airport  
 Model: 2001DC  
 db: 127  
 Coverage: 5200'



N CORD 45

FRONTAGE RD W

GARY UNDERLAND DR NW

I 35 S

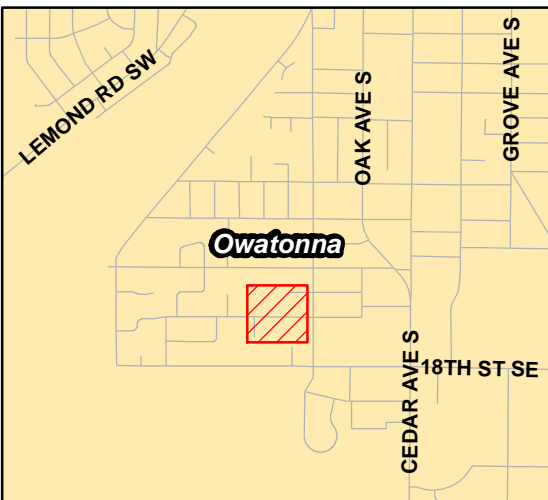
I 35 N

Owatonna

N CORD 45

26TH ST NW

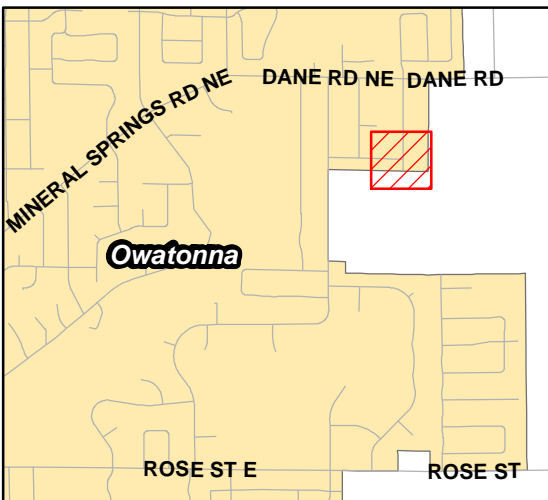




## Emergency Warning Siren Owatonna Site No. 14

Location: 400 16th St SW - Brown Park  
 Model: 2001DC  
 db: 127  
 Coverage: 5200'





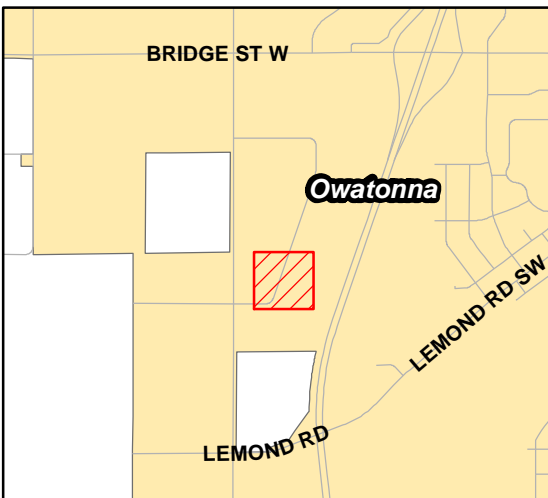
## Emergency Warning Siren Owatonna Site No. 15

Location: 2075 Edgewood Dr & Woodcrest  
Model: 2001DC  
db: 127  
Coverage: 5200'





ALEXANDER DR SW

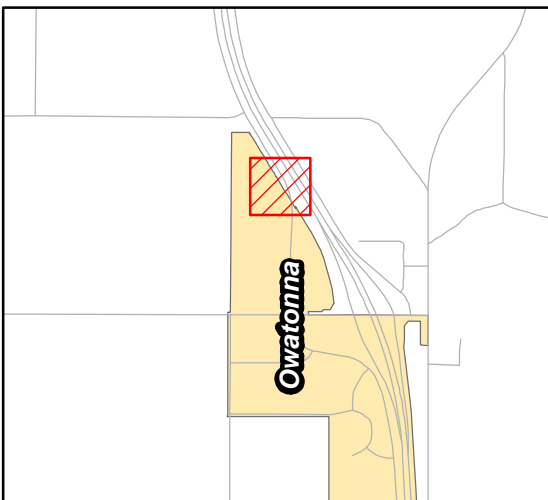
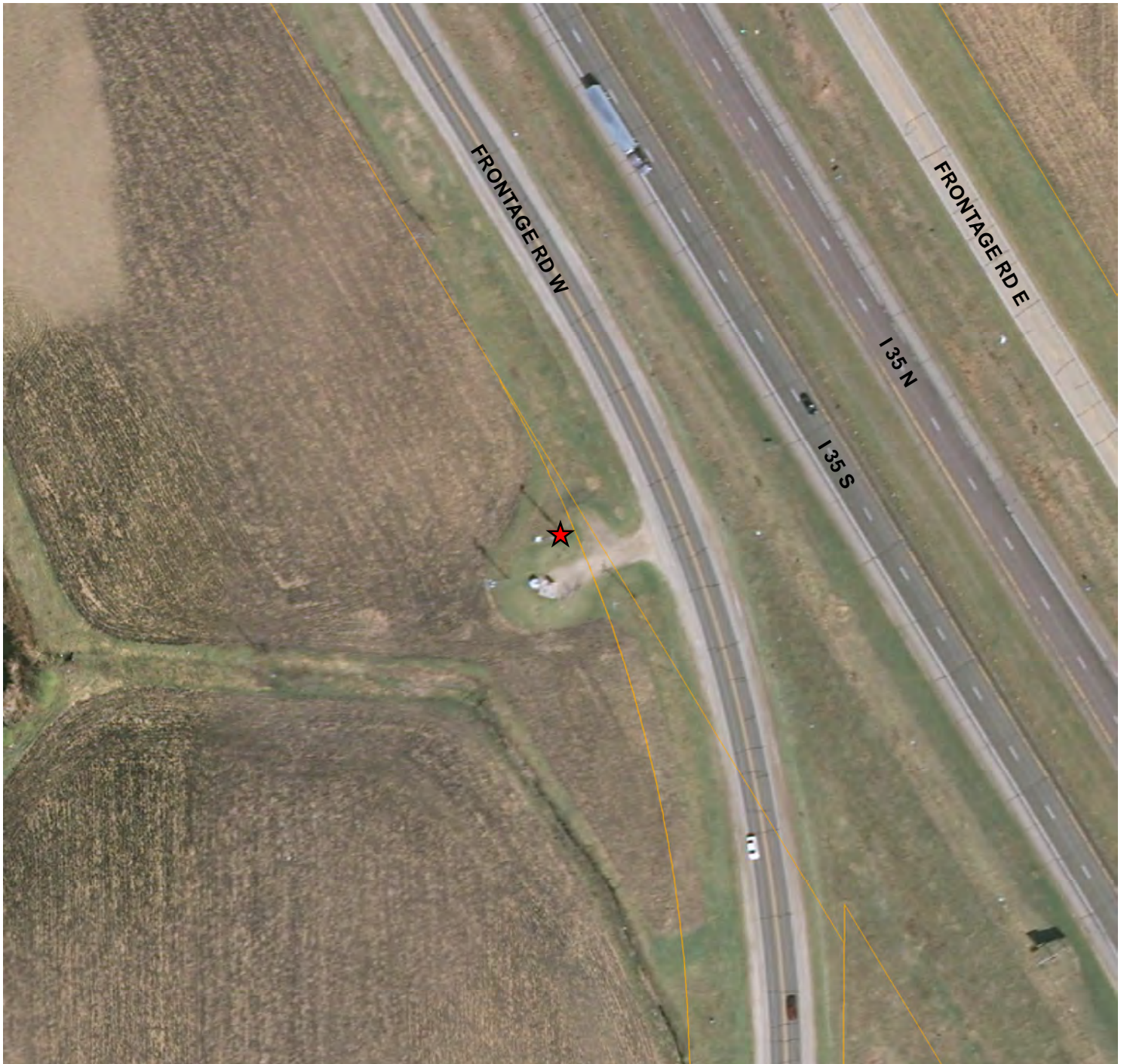


## Emergency Warning Siren Owatonna Site No. 16

Location: 965 Alexander Dr  
Model: 2001DC  
db: 128  
Coverage: 5200'



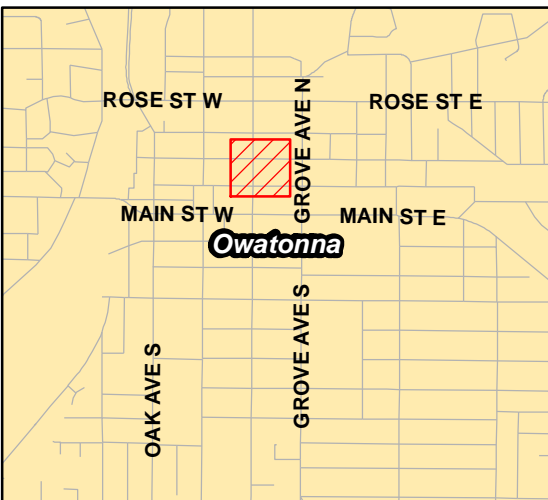
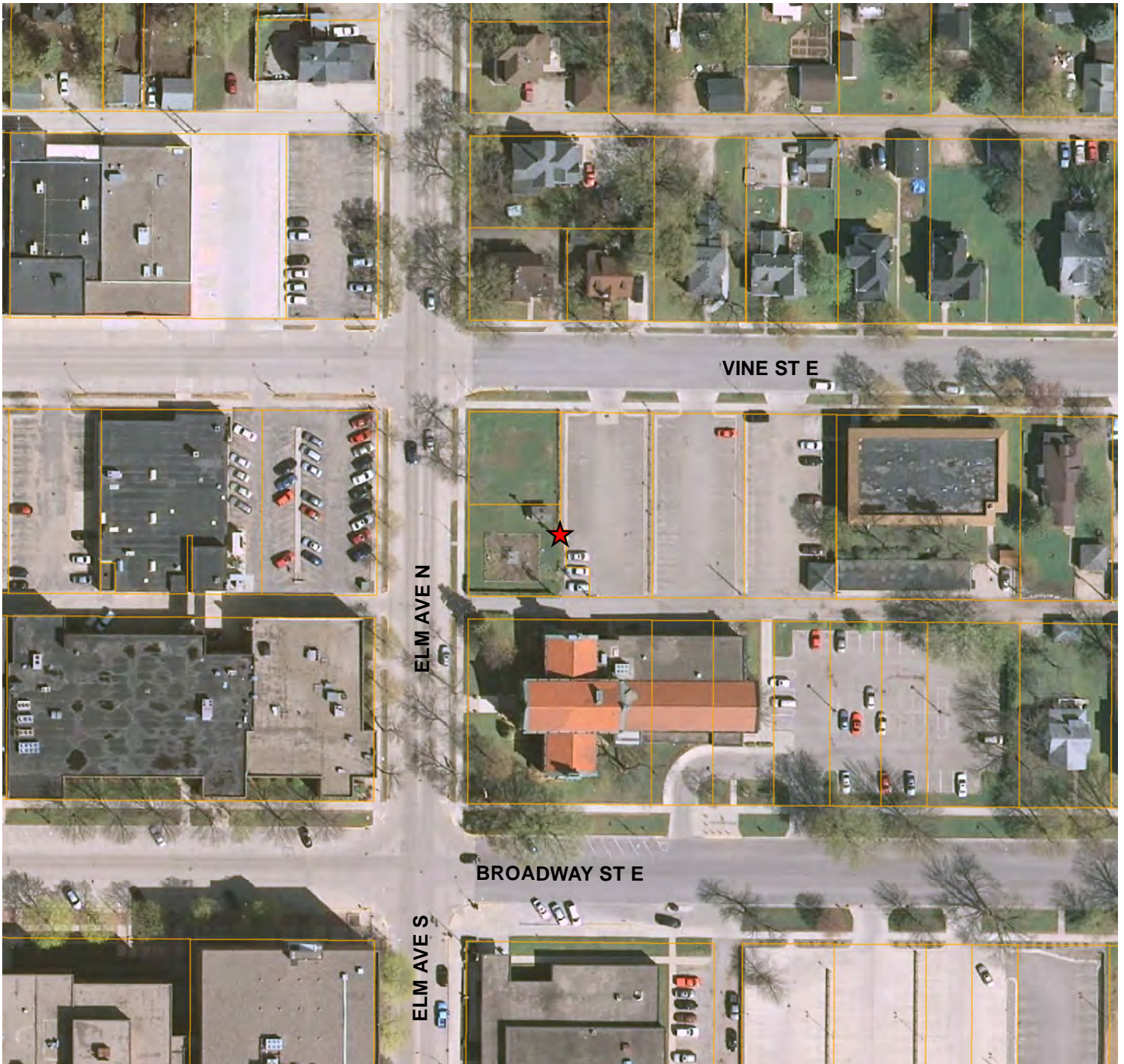




## Emergency Warning Siren Owatonna Site No. 17

Location: 4755 Frontage Rd W - Three Corners  
Model: 2001DC  
db: 128  
Coverage: 5200'

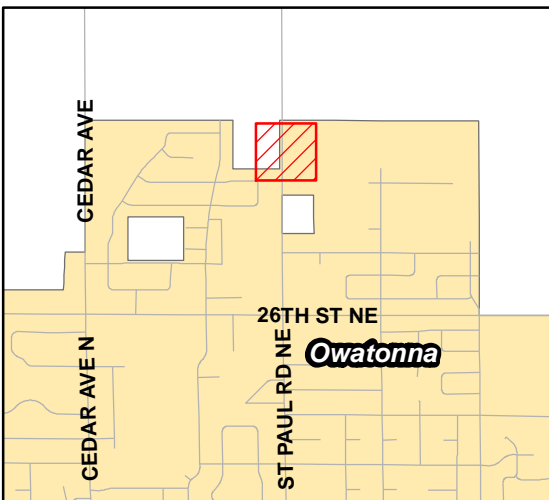




## Emergency Warning Siren Owatonna Site No. 18

Location: 115 Elm Ave N - Library  
 Model: 2001DC  
 db: 128  
 Coverage: 5200'

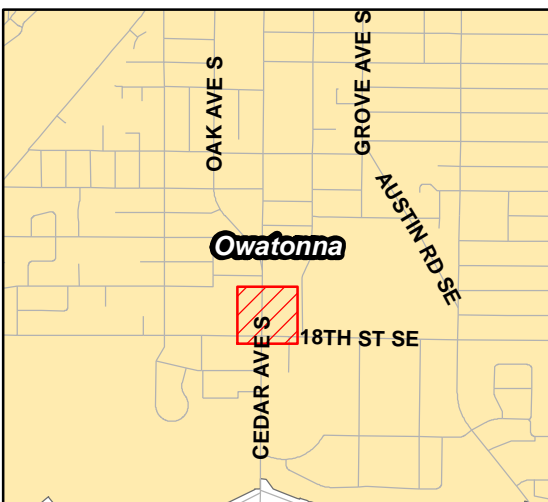




## Emergency Warning Siren Owatonna Site No. 19

Location: 3065 St Paul Rd - Water Park  
Model: MOD4016 Electronic  
db: 130  
Coverage: 6200'

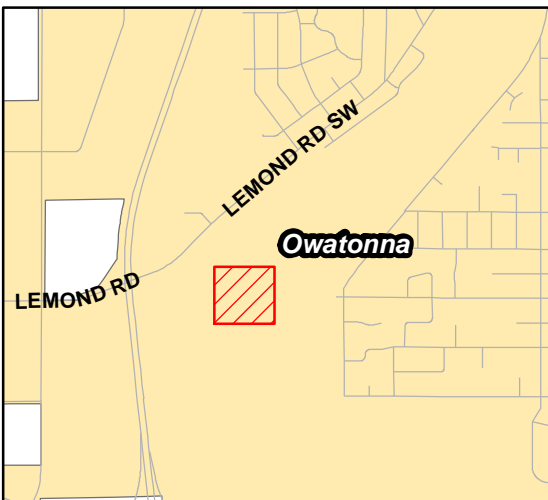




## Emergency Warning Siren Owatonna Site No. 20

Location: Cedar Ave S & 18th St SE - Fair Grounds  
 Model: MOD4016 Electronic  
 db: 130  
 Coverage: 6200'

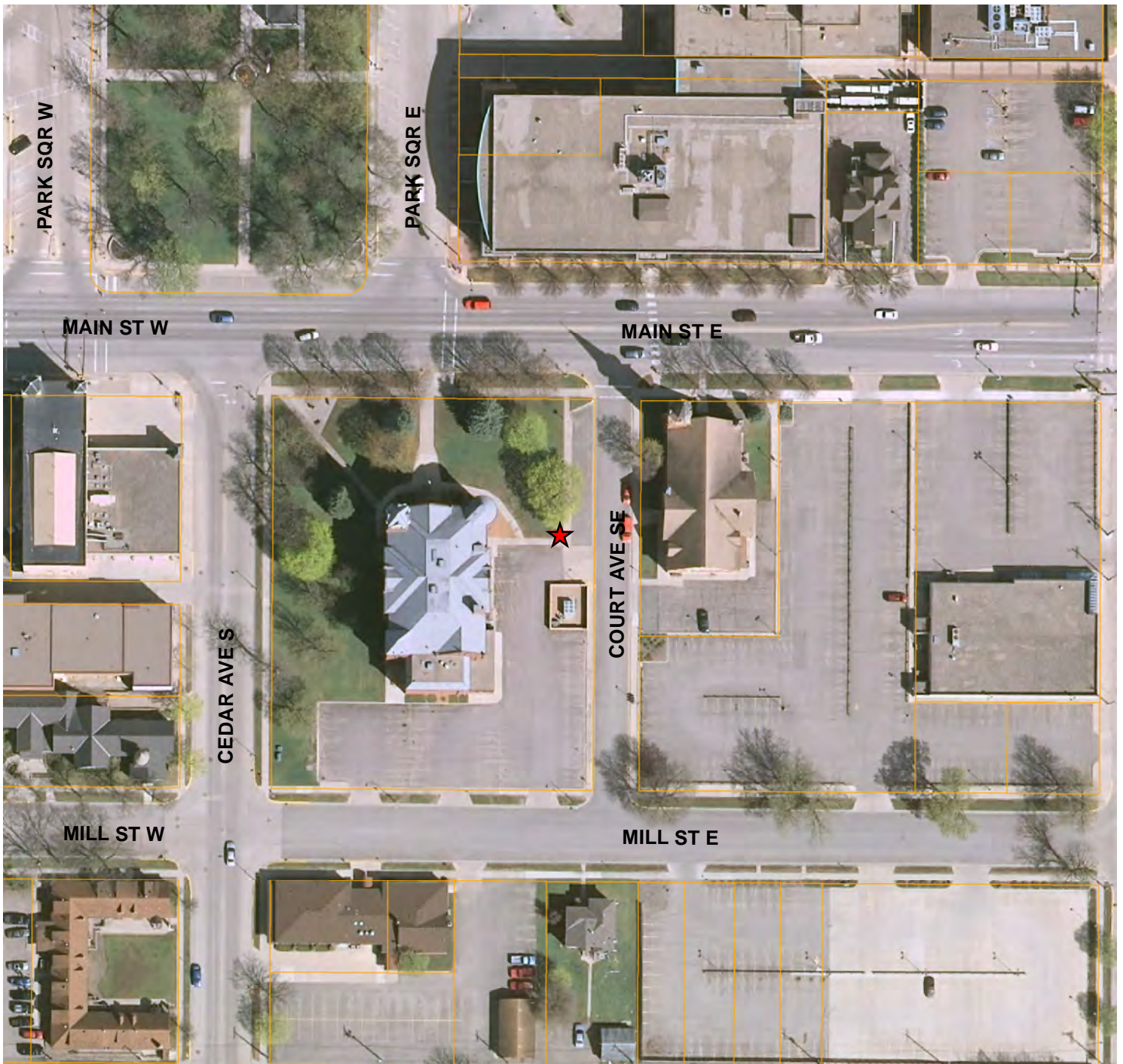




## Emergency Warning Siren Owatonna Site No. 21

Location: Lake Kohlmeier  
Model: MOD4016 Electronic  
db: 130  
Coverage: 6200'

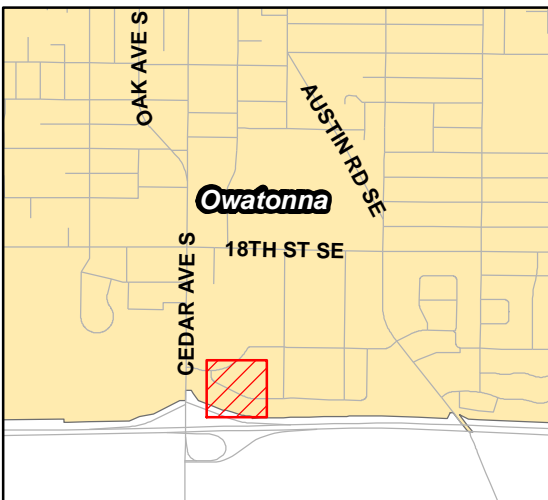




## Emergency Warning Siren Owatonna Site No. 22

Location: Court House  
 Model: MOD4016 Electronic  
 db: 130  
 Coverage: 6200'





## Emergency Warning Siren Owatonna Site

Location: 225 Cedardale Dr SE (New Location for #5)

Model:

db:

Coverage:

